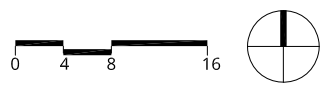


Seventh Floor - Suite 700

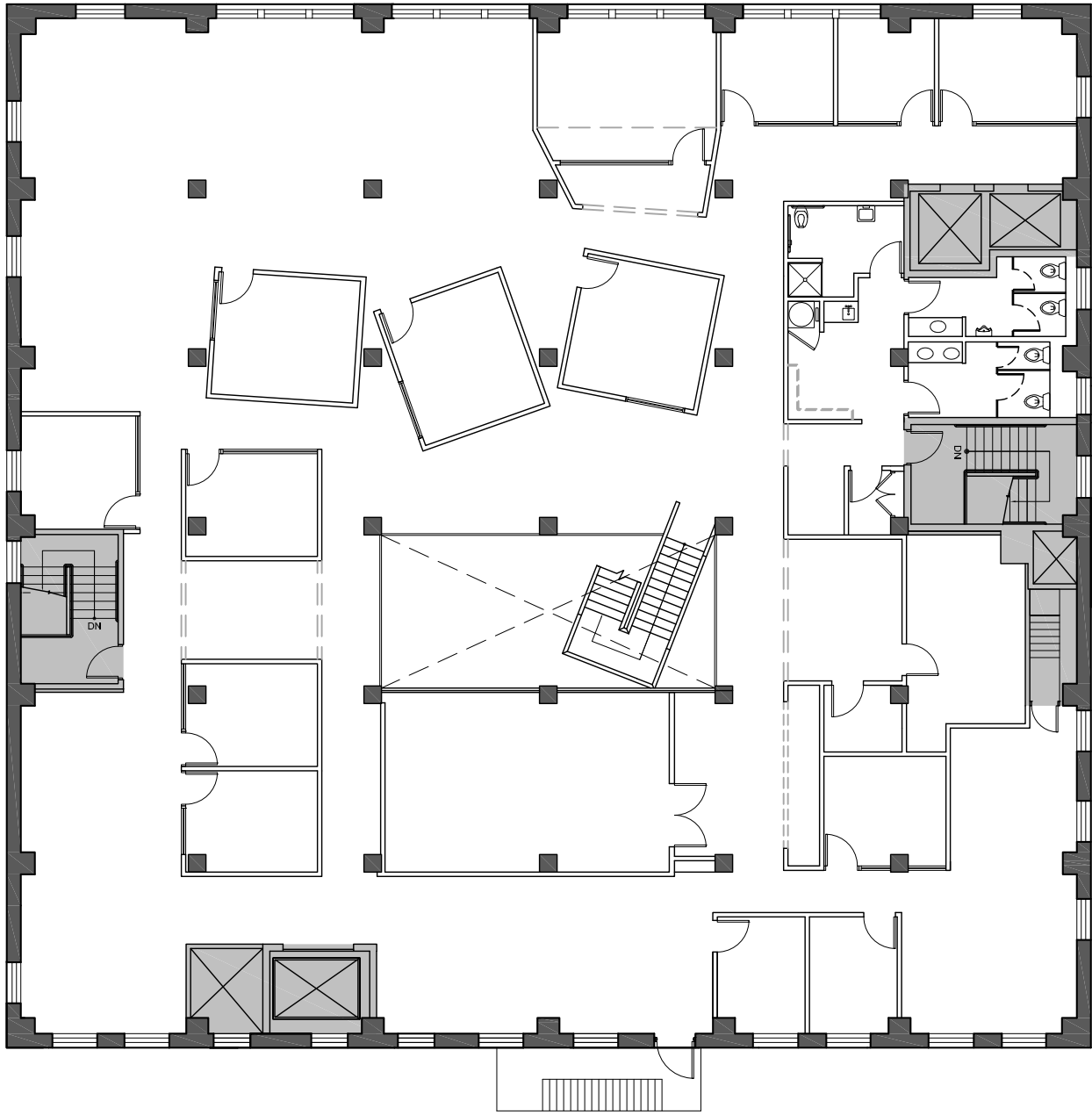


Note: Subject premises is unshaded

All furniture (including workstations) shown is for illustrative purposes only.

Plans are for preliminary design purposes. Friedman Properties, Ltd. advises field verification of existing conditions and dimensions prior to use.

04/08/2026



Eighth Floor - Suite 800



Note: Subject premises is unshaded